

GLOBALGEAR®



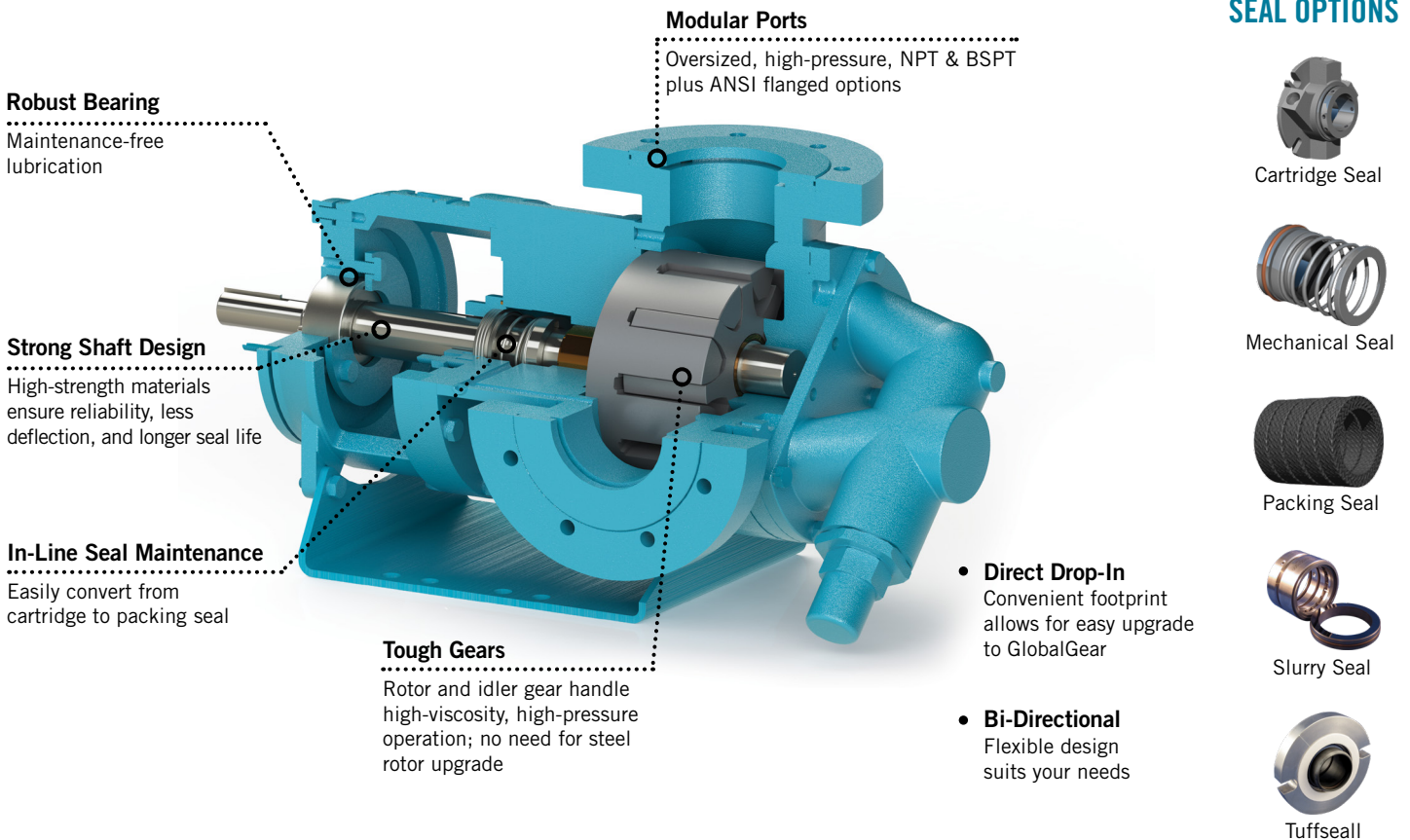
REDUCE MAINTENANCE TIME, INCREASE FLOW
INTERNAL GEAR PUMPS – GLOBALGEAR SERIES

 **Tuthill**

BUILT ON A TIME-TESTED DESIGN

...and more than 90 years of engineering experience

Capable of tackling the toughest high-viscosity applications, GlobalGear® uses a robust pump design along with stronger and more reliable materials to extend the pump's life, reducing the total cost of ownership. The result? An unbeatable pump that offers unparalleled performance and handles the most difficult applications worry free.



OTHER FEATURES & BENEFITS

Back Pull-Out Design

- Reduce downtime for service
- Maintain pump without disturbing piping or shaft alignment

Customized Options

- Relief valve
- A variety of seal choices
- Oversized and high-pressure flanges
- Tutriding process to harden surface of pump to resist abrasion, fatigue, and limit crack propagation
- Specialized construction for high temperatures
- Modular port options
- Jacketing

Design Features Extend Seal Life

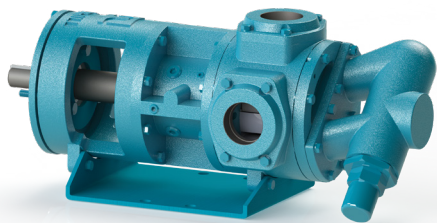
- Oversized shaft and bearing diameters on models GG130 - GG550 to minimize shaft deflection
- Large bore size for stuffing boxes for improved fluid circulation
- Internal venting to maximize seal cooling
- Proven high-viscosity seal solutions
- In-line seal maintenance

12500 S. PULASKI ROAD ALSIP, IL 60803 USA

P: 1.708.389.2500 • F: 1.708.388.0869

TUTHILLPUMP.COM

CAST IRON



Standard carbon steel rotor shaft

Differential pressures to 200 PSI (13.8 bar)

Temperatures to 600 °F (316 °C)

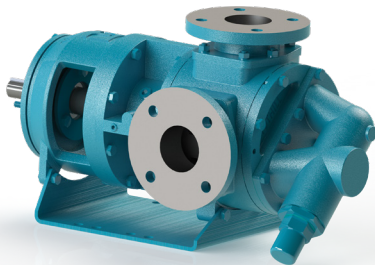
Viscosities to 1,000,000 SSU (220,000 cSt)

NOMINAL FLOW RATE

MODEL	MAX RPM	GPM				M ³ /HR			
			@		RPM		@		RPM
GG015	1800	15	@	1750	RPM	2.8	@	1450	RPM
GG030	1800	30	@	1750	RPM	5.7	@	1450	RPM
GG080	1500	60	@	1150	RPM	10.9	@	920	RPM
GG120	1200	75	@	780	RPM	20.0	@	920	RPM
GG130	1000	100	@	780	RPM	27.0	@	920	RPM
GG200	1000	135	@	640	RPM	31.0	@	640	RPM
GG210	800	140	@	520	RPM	32.0	@	520	RPM
GG250	640	200	@	640	RPM	45.4	@	640	RPM
GG350	750	350	@	750	RPM	79.5	@	750	RPM
GG550*	500	550	@	500	RPM	124.5	@	500	RPM

* Differential Pressures to 150 PSI (10.3 bar)

STAINLESS STEEL



Standard gall-resistant, Nitronic 60 rotor head & idler gear

Differential pressures to 150 PSI (10.3 bar)

Temperatures to 500 °F (260 °C)

Viscosities to 1,000,000 SSU (220,000 cSt)

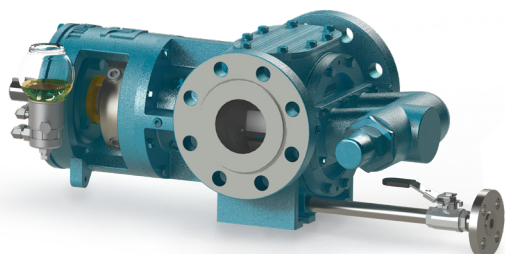
Max differential pressure to 100 PSI if fluid is < 100 SSU

NOMINAL FLOW RATE

MODEL	MAX RPM	GPM				M ³ /HR			
			@		RPM		@		RPM
GG015	1200	10	@	1150	RPM	2.8	@	1450	RPM
GG030	1200	20	@	1150	RPM	5.7	@	1450	RPM
GG080	1000	40	@	780	RPM	6.9	@	920	RPM
GG130	640	65	@	520	RPM	9.1	@	920	RPM
GG210	520	110	@	420	RPM	10.9	@	920	RPM
GG250	520	160	@	520	RPM	36.3	@	520	RPM
GG550**	350	350	@	350	RPM	80.0	@	350	RPM

** Differential Pressures to 125 PSI (8.6 bar)

CAST STEEL (API)



Differential pressures to 200 PSI (13.8 bar)

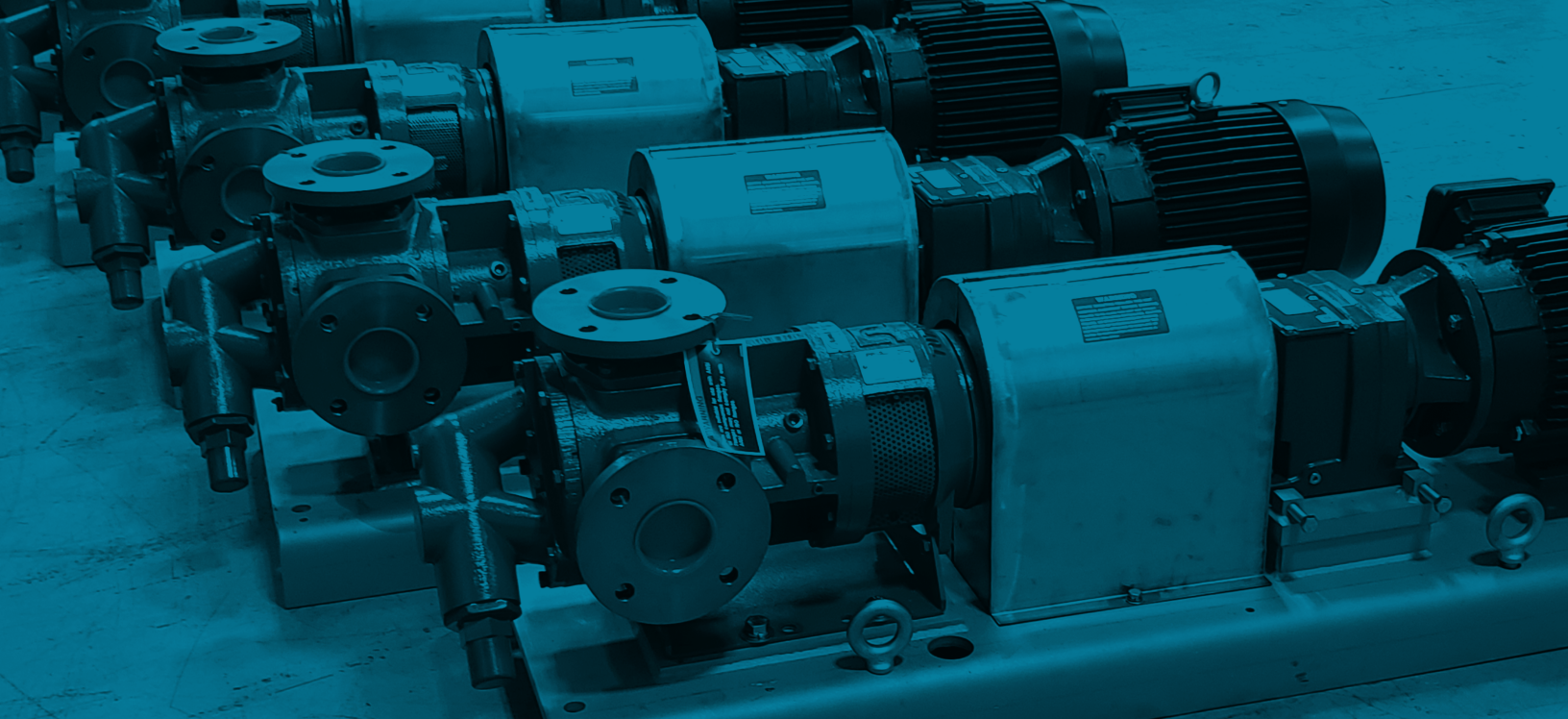
Temperatures to 600 °F (316 °C)

Viscosities to 1,000,000 SSU (220,000 cSt)

NOMINAL FLOW RATE

MODEL	MAX RPM	GPM				M ³ /HR			
			@		RPM		@		RPM
GG030	1800	30	@	1750	RPM	5.7	@	1450	RPM
GG130	1000	100	@	780	RPM	27.0	@	920	RPM
GG250	640	200	@	640	RPM	45.4	@	640	RPM
GG550 [†]	500	550	@	500	RPM	124.5	@	500	RPM

[†] Differential Pressures to 150 PSI (10.3 bar)



INDUSTRIES AND APPLICATIONS

- Adhesives & Sealants
- Chemical Processing
- Corrugated Box (Starch)
- Energy & Power
- Foam (Polyol & Isocyanates)
- Food & Beverage
- Lubes, Greases, & Blending
- Oil & Gas
- Personal Products
- Pulp & Paper
- Refined Food Oils
- Resins, Paints, & Coatings
- Soaps & Surfactants

ALSIP

12500 South Pulaski Road
Alsip, Illinois 60803 USA
P: 708.389.2500

ILKESTON

Birkdale Close
Manners Industrial Estate
Ilkeston, Derbyshire DE7 8YA UK
P: 44.0.115.932.5226

