

High Pressure Centrifugal Industrial Pumps



**Vertical & Horizontal
Multi-Stage
Coolant Series**



**RUTHMAN
COMPANIES**

www.gusher.com

Multi-Stage Series

Features Available:

1. Pressure to 400 P.S.I.
2. Pressurized System.
3. Double Pump, High and Low Pressure with one common motor.
4. Balanced mechanical seal or silicon and tungsten available.
5. Available mounted in either 10 through 200 gallon reservoir.
6. Discharge available in either N.P.T. or B.S.P.T.
7. Available in Vertical or Horizontal.
8. Custom options available upon request.



Services:

High Pressure Machine Tools

Vertical Multi-Stage Versatility



Models MS4 and MS5 End Suction Centrifugal Multi-Stage Available in 3 through 10 Stages and 1½ through 25 Horsepower.

Standard Features:

1. Rugged Grade 30 Cast Iron Construction.
2. Built in Mounting Flange.
3. Balanced Mechanical Seal.
4. Above Mounting Flange Discharge.
5. Greased For Life Bearings.
6. Standard Motors are 3 Phase, 230/460 Volt, 3450 RPM, and TEFC.
7. ¾" NPT and 1¼" NPT 2 Discharge.
8. Available in Base mounted or other Mounting Styles—contact factory.



Multi-Stage Options:

- Offers Dual Discharges.
One for low volume and high pressure, one for high volume and low pressure.
Both driven by one common motor.
- Available up to 36" of immersion with intermediate bushing.
- Standard models available with column tank, with flanged or threaded intake for exterior tank mounting.

Due to the various pumps and pump applications this manual may not apply to your specific pump. If you have any questions please consult the factory: 859-824-3100 or Fax: 859-824-7248.



Multi-Stage MSC3.5/ MSC4

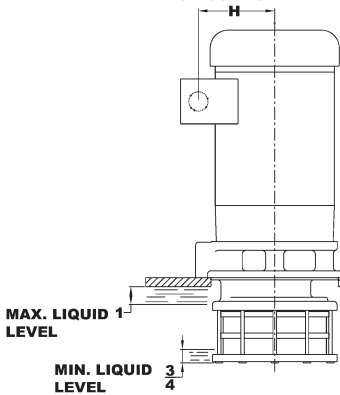
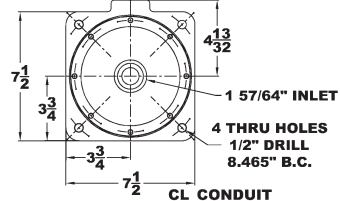
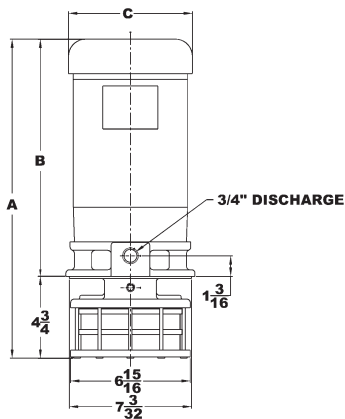


When Ordering Specify:

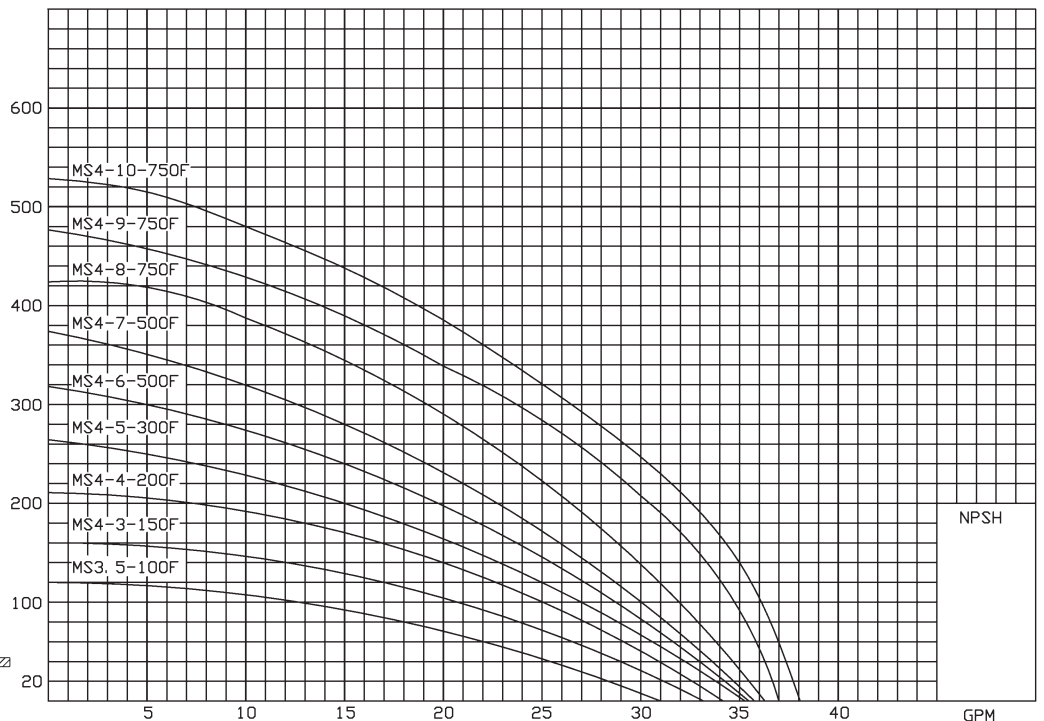
- Model No. MSC3.4 or MSC4
- Number of Stages
- Operating Conditions, G.P.M. and T.D.H. in feet or P.S.I.
- Motor Horse Power and Current Characteristics
- N.P.T. or B.S.P.T. Discharge
- Motor Speed 3450 RPM.

DIMENSIONS IN INCHES (mm)*

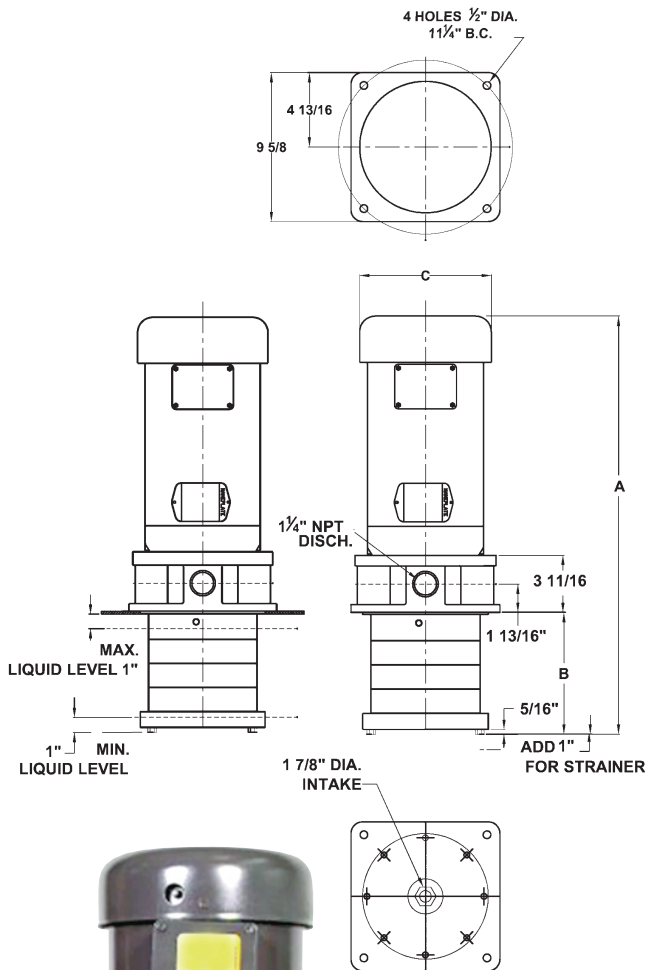
STAGES	MODEL	DISCH.	HP	A	B	C	G	H
1	MSC3.5-3-100FJ	3/4	1	17.49 (444)	12.75 (324)	7.0 (178)	5.25 (133)	4.25 (108)
3	MSC4-3-150FJ	3/4	1 1/2	17.49 (444)	12.75 (324)	7.0 (178)	5.25 (133)	4.25 (108)
4	MSC4-4-200FJ	3/4	2	19.69 (500)	13.75 (349)	7.0 (178)	5.25 (133)	4.25 (108)
5	MSC4-5-300FJ	3/4	3	21.63 (550)	14.50 (358)	7.0 (178)	5.25 (133)	4.25 (108)
6	MSC4-6-500FJ	3/4	5	24.08 (612)	15.75 (400)	8.5 (216)	5.87 (149)	4.87 (124)
7	MSC4-7-500FJ	3/4	5	25.50 (648)	15.75 (400)	8.5 (216)	5.87 (149)	4.87 (124)
8	MSC4-8-500FJ	3/4	5	26.75 (444)	15.75 (400)	8.5 (216)	5.87 (149)	4.87 (124)
8	MSC4-8-750FJ	3/4	7 1/2	28.25 (718)	17.25 (438)	8.5 (216)	5.87 (149)	4.87 (124)
9	MSC4-9-750FJ	3/4	7 1/2	29.25 (743)	17.25 (438)	8.5 (216)	5.87 (149)	4.87 (124)
10	MSC4-10-750FJ	3/4	7 1/2	30.50 (775)	17.25 (438)	8.5 (216)	5.87 (149)	4.87 (124)



MSC3.5 & MSC4 with Impeller 25128



Multi-Stage MSC5



When Ordering Specify:

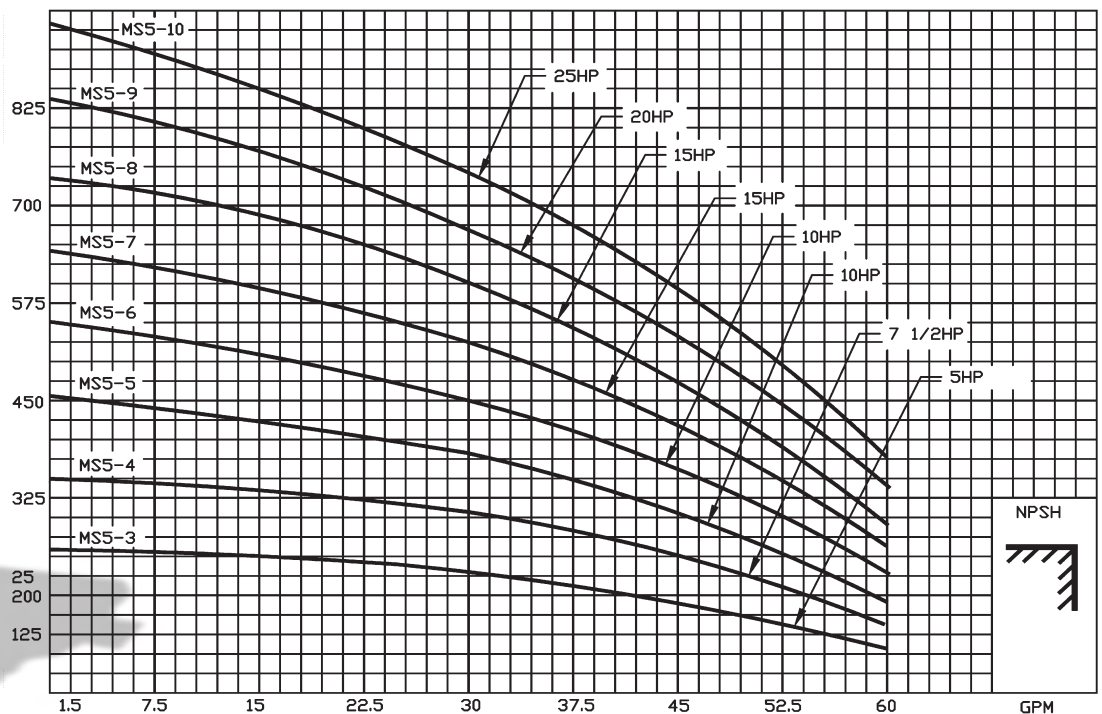
- Model No. MSC5
- Number of Stages
- Operating Conditions, G.P.M. and T.D.H. in feet or P.S.I.
- Motor Horse Power and Current Characteristics
- N.P.T. or B.S.P.T. Discharge
- Motor Speed 3450 RPM.

DIMENSIONS IN INCHES

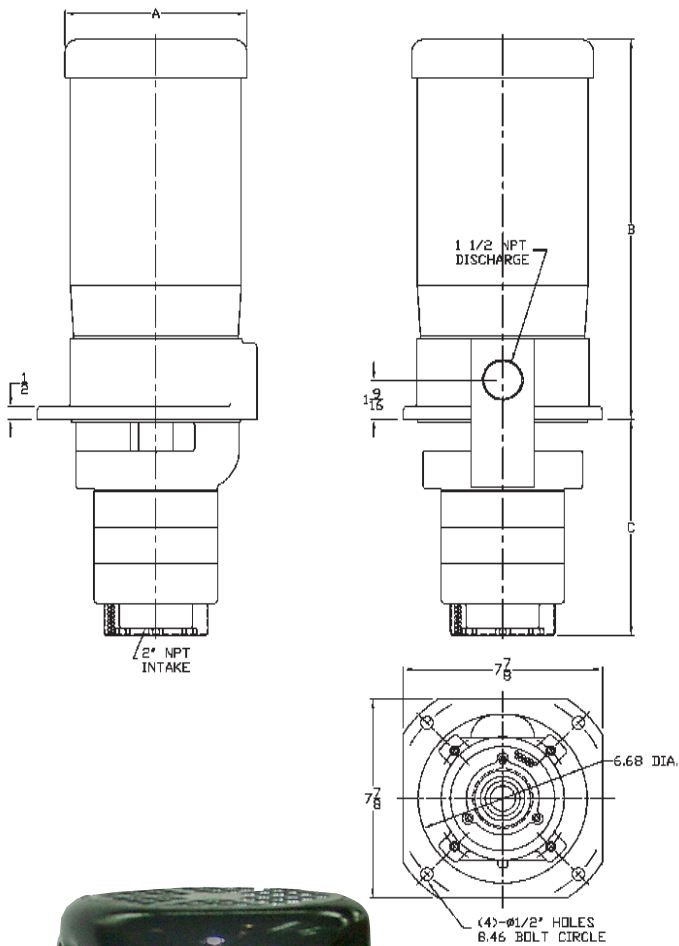
MODEL	HP	A	B	C
MSC5-3-500	5	25.26	6	8.5
MSC5-4-750	7.5	26.87	7.56	8.5
MSC5-5-1000	10	28.9	9.12	10.37
MSC5-6-1000	10	36.46	16.68	10.37
MSC5-7-1500	15	41.53	18.25	10.62
MSC5-8-1500	15	43.09	19.81	10.62
MSC5-9-2000	20	44.75	21.37	10.62
MSC5-10-2500	25	50	22.93	14.5



MS5 with Impeller 25128



Multi-Stage MSD4



When Ordering Specify:

- Model No. MSD4
- Number of Stages
- Operating Conditions at G.P.M. and T.D.H. in feet
- Motor Horse Power and Current Characteristics

Note: 208/230/460 volts
60 cycles – Standard

Mounting Hole Size: 6.75

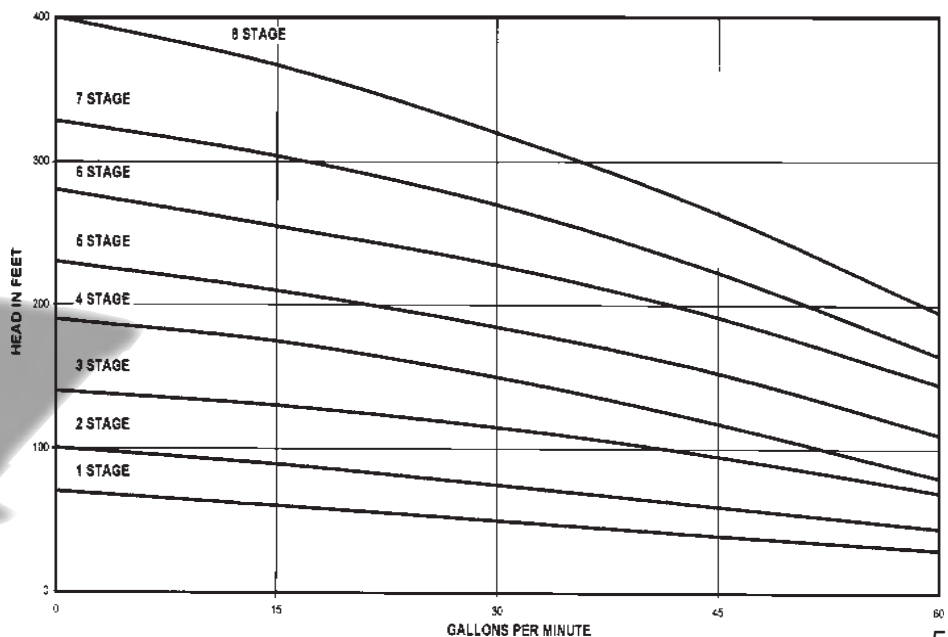
Other current characteristics available.

DIMENSIONS IN INCHES

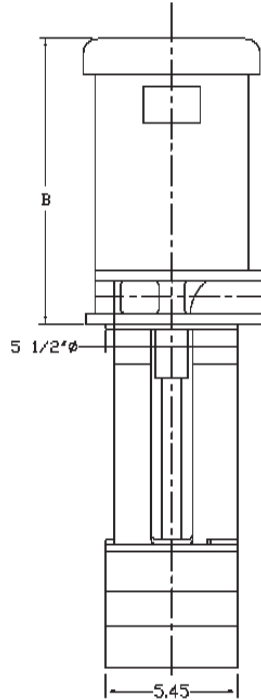
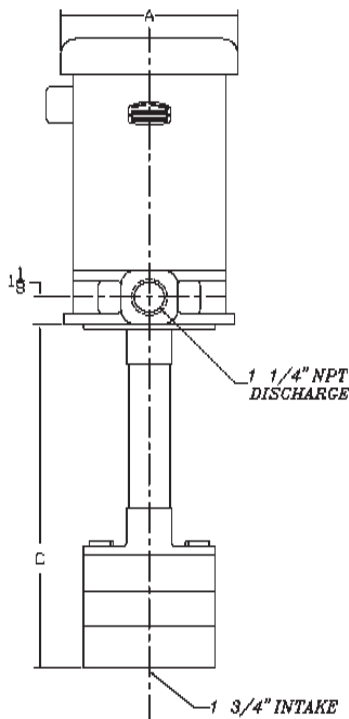
STAGES	HP	A	B	C
1	1.0	7.25	12.0	5.25
2	2.0	7.25	13.0	6.68
3	3.0	7.25	13.68	8.12
4	5.0	8.50	15.18	9.56
5	5.0	8.50	15.18	11.00
6	5.0	8.50	15.18	12.43
7	7.5	8.50	16.93	13.87
8	10.0	10.25	17.43	15.31



MSD4
3450 RPM



Multi-Stage MSV



When Ordering Specify:

- Model No. MSV
- Number of Stages
- Operating Conditions at G.P.M.
- Motor Horse Power and Current Characteristics
- 'C' Dimension in Inches

Note: 230/460 volts

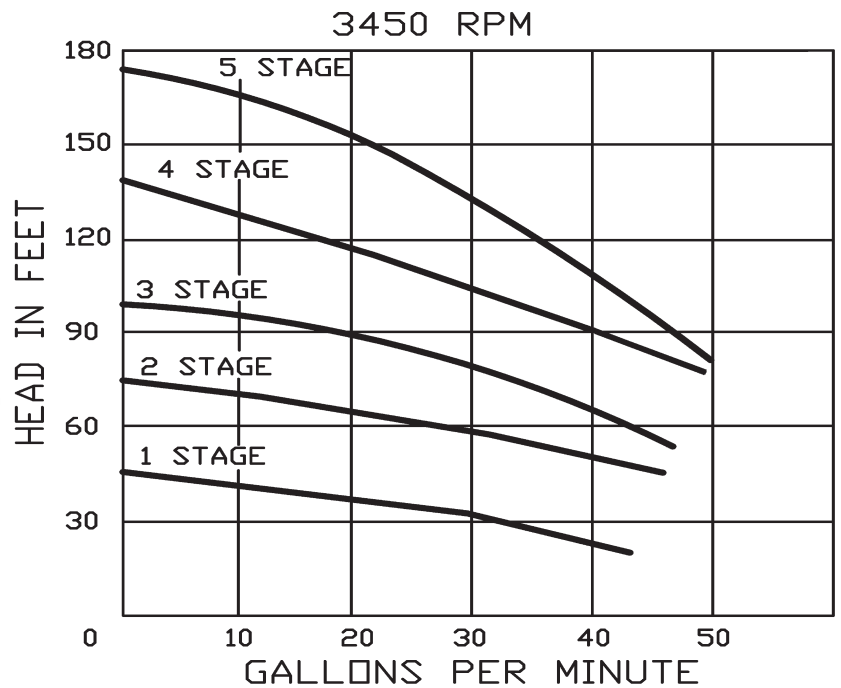
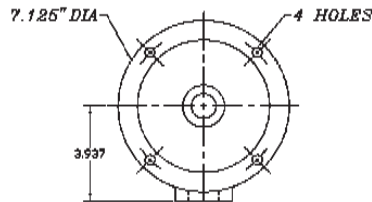
60 cycles – Standard

Mounting Hole Size: 5.625

Other current characteristics available.

DIMENSIONS IN INCHES

STAGES	HP	A	B	C
1	1.0	7.0	13.12	3.68
2	2.0	7.0	14.12	5.25
3	3.0	7.0	14.87	6.81
4	3.0	7.0	14.87	8.37
5	5.0	8.5	16.12	9.93





A RUTHMAN COMPANY

**Gusher Pumps is a Division of
Ruthman Companies
Corporate Headquarters**

1212 Streng Street
Cincinnati, OH 45233
Phone: 513-559-1901
Fax: 513-559-0035
Web: www.ruthmancompanies.com

Gusher Pumps of Dry Ridge

22 Ruthman Drive
Dry Ridge, KY 41035
Phone: 859-824-5001
Fax: 859-824-3011
Web: www.gusher.com

Gusher Pumps of Williamstown

115 Industrial Drive
Williamstown, KY 41097
Phone: 859-824-3100
Fax: 859-824-7248
Web: www.gusher.com

Gusher Pumps of Cincinnati

1212 Streng Street
Cincinnati, OH 45233
Phone: 513-559-1901
Fax: 513-559-0035
Web: www.gusher.com

Gusher Pumps of California

8226 Salt Lake Avenue
Cudahy, CA 90201
Phone: 323-773-0847
Fax: 323-773-0958
Email: gusherca@aol.com

Gusher Pumps of New Castle

403 North Ninth Street
New Castle, IN 47362
Phone: 765-529-5624
Fax: 765-521-0008
Email: gusherpump@insightbb.com

BSM Pump Corp.

180 Frenchtown Road
North Kingstown, RI 02852
Phone: 401-471-6350
Fax: 401-471-6370
Web: www.bsmpump.com

Nagle Pumps

1249 Center Avenue
Chicago Heights, IL 60411
Phone: 708-754-2940
Fax: 708-754-2944
Web: www.naglepumps.com

Wagner Processing – Bay Area

23510 Bernhardt Street
Hayward, CA 94545
Phone: 510-786-3929
Fax: 510-786-3722
Web: www.wagnerprocess.com

Ruthman... Another Word for Innovation



It began in 1913, servicing mechanical components of the steamboats on the Ohio River. The company founder, Alois Ruthman, was a man of vision and saw part of the future of the company was in the development of a reliable industrial pump.

In 1924, with the conception of the first vertical ball bearing sealless centrifugal pump, Ruthman Pump and Engineering furthered the design on a unit with a one piece motor driven shaft. The pump was called "Gusher", giving birth to the trade name Gusher Pumps, and the coining of the term "coolant pump".

Wanting to carry on the tradition of quality and reliability started by his father, Thomas R. Ruthman joined the company in 1949. In the early 1990's Thomas R. Ruthman's son, Thomas G. Ruthman joined the company, continuing this same tradition. Maintaining the reputation of Gusher Pumps by innovation and customer service,

Wagner Processing – Central Valley

3675 N. Wilcox Street #C
Stockton, CA 95215
Phone: 209-931-0100
Fax: 209-931-7910
Web: www.wagnerprocess.com

Great Lakes Pump & Supply Co.

1075 Naughton
Troy, MI 48083
Phone: 248-528-9100
Fax: 248-528-9015
Web: www.greatlakespump.com

Process Systems, Inc.

Michigan, Main Headquarters
23633 Pinewood
Warren, MI 48091
Phone: 586-757-5711
Fax: 586-758-6996
Web: www.INFO@psi4pumps.com

Indiana
485 N State Route 341 South
Mellott, IN 47958

Phone: 765-295-2206
Fax: 765-295-2243
Web: www.process-systems-inc.com

Worldwide:

Ruthmann Pumpen

Northberger Strabe 60
Eschweiler Germany D-52249
Phone: +49 (0) 2403 5595 0
Fax: +49 (0) 2403 5595 20
Web: www.ruthmannpumpen.de

Birmingham Pump

Unit 7 Network Park
Duddeston Mill Road
Saltley, Birmingham England B81AU
Phone: +44 (0) 121 503 3000
Fax: +44 (0) 121 503 3002
Web: www.birminghampumps.co.uk

**Guan Shen Industrial Pumps
(Shanghai) Company**

广申工业泵（上海）有限公司
Gusher Pumps (Shanghai) Co., Ltd.
Building D, Room 416
No. 188 East Jiagwan Road
Shanghai, 200081
P.R. CHINA
上海市东江湾路 188 号 D 栋 416 室
Phone: 86-21-33872056
Phone: 86-21-33872058
Fax: 86-21-33872057

电话: 86-21-33872056
86-21-33872058
传真: 36-21-33872057



**RUTHMAN
COMPANIES**