



THIS IS KEY

KEY HOSE

MUNICIPAL HOSE PRODUCTS



# TABLE OF CONTENTS



- Hose Experts ■ 2
- Combat Ready ■ 4
- Combat Sniper ■ 6
- TRU-ID ■ 8
- Big-10 ■ 10
- Eco-10 ■ 12
- Key-Lite ■ 14
- Magnum/Maglite ■ 16
- Dura-Flow ■ 18
- Pro-Flow ■ 20
- Pro-Flow HP ■ 22
- Type II ■ 24
- Type I ■ 26
- 1061 Pencil Line ■ 28
- Reel Lite ■ 29
- Know Your Flows ■ 30
- Key-Lok Technology ■ 30
- UL and ULC Listings ■ 31
- FM Approvals ■ 31
- Coupling Options ■ 31
- Warranty Information ■ 31
- NFPA Definitions ■ 32



THE BEST IN FIRE HOSE MANUFACTURING WORLDWIDE

“We are dedicated to the manufacture and delivery of the highest quality fire hose products, combining the best in raw materials with expert craftsmanship.”

With over three decades of service, Key Fire Hose is the industry leader in the design and manufacture of woven jacketed and rubber covered fire hose products. In striving to become the “best hose company in the world,” we’ve grown from our original 16 looms to reach triple-digit loom capacity with multiple facilities proudly based and manufacturing in southeast Alabama.

## THE FIRE HOSE EXPERTS

At Key, we have continually improved every process and product we offer to better serve firefighters here and abroad. Our unique weaving techniques for jacketed hose reduce friction loss 20% to 50% while innovative yarn combinations result in jackets that are 25% lighter and up to 25% stronger.

To obtain the highest levels of performance in the multitude of environments that firefighters encounter, modern day hose and nozzle offerings must be properly matched to create a viable water delivery system. So, how will you make the attack? How will you get the “wet” stuff on the “red” stuff? It’s not a surround-and-drown, you must make an advance. Will the supply line provide a dependable flow of water? Will your attack line be reliable and maneuverable to complete a successful attack? Quality, dependability and reliability.

THIS IS KEY

“More looms and manufacturing capacity than any other fire hose manufacturer in the world.”

# COMBAT READY

## DOUBLE JACKET ATTACK HOSE



Combat Ready is the double jacket attack line engineered from the inside out — delivering it all, higher flows, superior heat and abrasion resistance and increased durability. Combat Ready combines ring spun polyester staple fibers over an inner lining consisting of a one-piece extruded through-the-weave nitrile/PVC tube — making the tube, jacket liner and cover one complete assembly. This legendary through-the-weave design reduces friction loss while providing unmatched kink resistance.

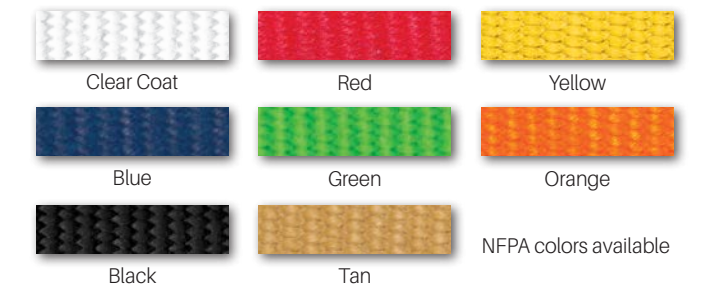
Combat Ready shall be “doubled ringed” with aluminum 6061-T6 USA manufactured couplings. Knurled couplings, 2" x 2 1/2" and other custom features available upon special request. Barcode recess available at additional charge.

## THE BEST ATTACK HOSE, GUARANTEED

Designed for low pressure high volume nozzles, Combat Ready offers high flow capabilities to combat the most aggressive attack situations. The outer jacket is available with double dip “Key-Lok” polyurethane based polymer impregnation for enhanced abrasion and moisture resistance. Features a 10-year warranty, which includes a 1-year all hazards warranty.

Diameter	Part No.	Service Test	Proof Test	Coefficient of Flow	Bowl Size	Weight Uncoupled
1 3/4"	DP17-1000	500 psi	1000 psi	6.59	2 1/4"	0.38 lbs/ft
2"	DP20-1000	500 psi	1000 psi	*4.13	2 2/5"	0.44 lbs/ft
2 1/2"	DP25-1000	500 psi	1000 psi	1.8	3"	0.52 lbs/ft

\*Coefficient of flow of 4.13 is attained when using 2 1/2" coupling. The 1 1/2" coupling option has a 5.25 coefficient of flow.



# COMBAT SNIPER

## DOUBLE JACKET ATTACK HOSE



Combat Sniper is an operational game-changing attack line with legendary, double jacketed, extruded through-the-weave nitrile/PVC tube construction and true 1.78" diameter.

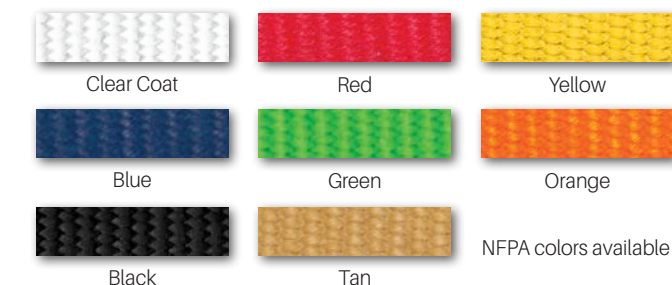
Combat Sniper attack hose is treated with a special "Key-Lok" polyurethane based polymer impregnation for enhanced color and added abrasion resistance. Combat Sniper shall be coupled with aluminum 6061-T6 USA manufactured couplings.

## PUSHING TECHNOLOGY FORWARD

Combat Sniper was built for use with low pressure/high volume nozzles built to reduce hose whip and optimize friction loss, all while delivering targeted flow ranges of 145-175 gpm. This innovative design provides premium kink resistance that allows for precise handling during the push for tight controlled water mapping. Packs on the shoulder as well as it does in the hose bed. Features a 10-year warranty, which includes a 1-year all hazards warranty.

Diameter	Part No.	Service Test	Proof Test	Burst Test	Bowl Size	Weight Uncoupled
1.78"	DP17-100S	500 psi	1000 psi	1500 psi	2.125"	0.40 lbs/ft

Targeted Flow Rates: 145-175 gpm (1.78")





## DOUBLE JACKET RUBBER LINED ATTACK HOSE



TRU-ID sets new standards for an ergonomic, higher quality, double-jacketed fire hose. At the core of TRU-ID is an exclusive "true internal diameter" of 1.75", 2.25" or 2.50". Manufactured to precision, this technology greatly lowers the overall hose weight by eliminating additional water found in over-sized attack lines — thus reducing firefighter fatigue. Virtually kink resistant, TRU-ID handlines are designed for use with low pressure/high volume nozzles built to reduce hose whip and optimize friction loss, all while delivering targeted flow rates, guaranteed.

## FOR COMMAND AND CONTROL

Our unique 2.25" TRU-ID is the first new diameter attack hose to be offered in decades. Born out of the challenges faced by today's progressive firefighting community, TRU-ID 225 is ideally suited for high rise applications and large caliber attack line operations. When charged, each 50' length of TRU-ID 225 eliminates over 20 pounds of weight clearly outperforming traditional 2 1/2" attack lines. TRU-ID 225 features a smaller outside diameter for a more ergonomic grip to easily maneuver and guide the hose. A robust traditional construction with tru-tuned diameter is guaranteed to wash out kinks and deliver targeted flow rates while providing the nozzleman increased mobility with less fatigue, every time.

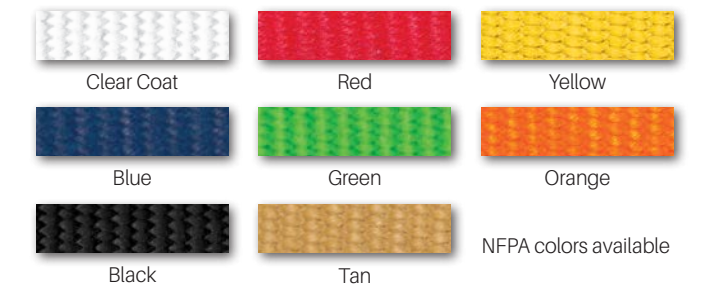
On the outside, our premium double jacket construction enhances flexibility while offering higher abrasion and puncture resistance for maximum dependability on scene.

TRU-ID comes standard with lightweight, laser engraved, aluminum alloy couplings. These anodized, threaded expansion ring couplings are guaranteed for the life of the hose. The laser engraved TRU-ID logo is your assurance of genuine TRU-ID technology. Barcode recess available at additional charge.

Classic performance in an innovative design and rugged construction guaranteed to withstand the rigors of the fire ground for years to come. Features a 10-year warranty, which includes a 1-year all hazards warranty. Seize the power of targeted flows with command and control performance.

Diameter	Part No.	Service Test	Proof Test	Burst Test	Bowl Size	Weight Uncoupled
1.75"	DP17-TRU	400 psi	800 psi	1200 psi	2.125"	0.44 lbs/ft
2.25"	DP22-TRU	400 psi	800 psi	1200 psi	2.6875"	0.56 lbs/ft
2.50"	DP25-TRU	400 psi	800 psi	1200 psi	2.8125"	0.56 lbs/ft

Targeted Flow Rates: 125-185 gpm (1.75")  
240-265 gpm (2.25") // 200-325 gpm (2.50")  
\*UL Listed



# BIG-10

## HEAVY DUTY RUBBER LINED FIRE HOSE

The standard in double jacket construction, combining 100% premium ring spun and filament polyester fibers over a heavy wall, ozone resistant, EPDM rubber liner. The outer jacket is mildew resistant and available with our iconic "Key-Lok" polyurethane based polymer impregnation for maximum abrasion and moisture resistance. Rugged, easy to handle and preferred by metro cities across the US and Canada — available in exclusive FDNY Spec with 1.88" inside diameter and heavier construction with a 1-year all hazards warranty.

### FOR SUPPLY AND ATTACK SITUATIONS

This reliable, double jacket fire hose is UL Listed\*, tested to 600 and 800 psi and meets MIL-H-24606 latest edition for abrasion resistance. Features a 10-year warranty and lifetime liner delamination guarantee.



Big-10 can be coupled with 6061-T6 aluminum threaded couplings or forged Storz. Special threads or other custom features available upon request. Barcode recess available at additional charge.

Diameter	Part No.	Service Test	Proof Test	Burst Test	Bowl Size	Weight Uncoupled
*1 1/2"	DP15-800	400 psi	800 psi	1200 psi	1 5/16"	0.34 lbs/ft
*1 3/4"	DP17-800	400 psi	800 psi	1200 psi	2 1/8"	0.38 lbs/ft
1 3/4" FDNY	DP18-800-FDNY	400 psi	800 psi	1200 psi	2 1/4"	0.42 lbs/ft
*2 1/2"	DP25-800	400 psi	800 psi	1200 psi	3"	0.54 lbs/ft
*3"	DP30-800	400 psi	800 psi	1200 psi	3 1/2"	0.74 lbs/ft
*3 1/2"	DP35-600	300 psi	600 psi	900 psi	4 5/16"	0.90 lbs/ft

\*UL Listed



# ECO-10

## LIGHTWEIGHT DOUBLE JACKET RUBBER LINED HOSE

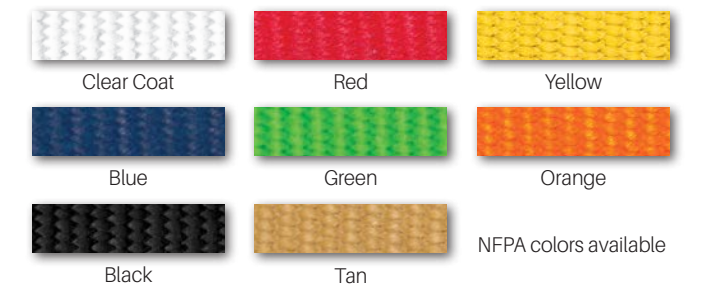
Lightweight, double jacket construction, combining 100% premium ring spun staple and filament polyester fibers over a thin wall, high tensile, EPDM rubber liner. The outer jacket is mildew resistant and available with double dip "Key-Lok" polyurethane based polymer impregnation for abrasion and moisture resistance. A proprietary reverse twill weave construction reduces friction loss, while engineered yarn selections lighten the hose up to 25% compared to competitive offerings.

### FOR SUPPLY AND ATTACK SITUATIONS

This reliable, double jacket fire hose with Key-Lok treatment is tested to 600 and 800 psi, meets MIL-H-24606 latest edition for abrasion resistance and is UL Listed\*. Features a 10-year warranty and lifetime liner delamination guarantee.

Eco-10 can be coupled with 6061-T6 aluminum threaded couplings or forged Storz. Brass, special threads or other custom features available upon request. Barcode recess available at additional charge.

Diameter	Part No.	Service Test	Proof Test	Burst Test	Bowl Size	Weight Uncoupled
1"	DP10-800	400 psi	800 psi	1200 psi	1 <sup>3</sup> / <sub>8</sub> "	0.14 lbs/ft
**1 <sup>1</sup> / <sub>2</sub> "	DP15-800-ECO	400 psi	800 psi	1200 psi	1 <sup>5</sup> / <sub>16</sub> "	0.23 lbs/ft
*1 <sup>3</sup> / <sub>4</sub> "	DP17-800-ECO	400 psi	800 psi	1200 psi	2 <sup>1</sup> / <sub>16</sub> "	0.28 lbs/ft
*2"	DP20-800	400 psi	800 psi	1200 psi	2 <sup>2</sup> / <sub>5</sub> "	0.31 lbs/ft
**2 <sup>1</sup> / <sub>2</sub> "	DP25-800-ECO	400 psi	800 psi	1200 psi	3"	0.42 lbs/ft
*3"	DP30-800-ECO	400 psi	800 psi	1200 psi	3 <sup>3</sup> / <sub>8</sub> "	0.56 lbs/ft
4"	DP40-600	300 psi	600 psi	900 psi	4 <sup>1</sup> / <sub>2</sub> "	0.82 lbs/ft
5"	DP50-600	300 psi	600 psi	900 psi	5 <sup>1</sup> / <sub>2</sub> "	1.14 lbs/ft



\*UL Listed to 400 psi  
\*\*UL Listed to 400 psi and FM Approved





# KEY-LITE

## LIGHTWEIGHT POLYESTER FIRE HOSE

Ultra light, double jacket construction, utilizing high strength ring spun and filament polyester fibers to deliver a highly abrasion resistant lightweight attack hose. A dependable polyurethane lining eliminates ozone deterioration while maintaining lightweight integrity of the hose. The outer jacket is mildew resistant and available with iconic "Key-Lok" polyurethane based polymer impregnation for additional abrasion and moisture resistance. A proprietary reverse twill weave construction reduces friction loss, while ensuring the hose is lighter and easier to maneuver.

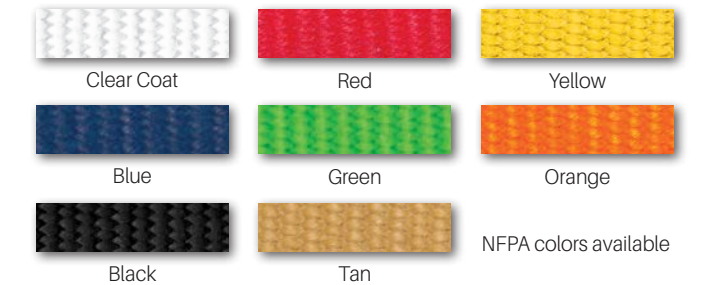
Key-Lite can be coupled with 6061-T6 aluminum threaded couplings or forged Storz. Special threads or other custom features available upon request. Barcode recess available at additional charge.



## FOR SUPPLY AND ATTACK SITUATIONS

Key-Lite liner material meets NSF (National Sanitation Foundation) Standard 61 for potable water. This reliable, double jacket fire hose is tested to 600 and 800 psi and meets MIL-H-24606 latest edition for abrasion resistance. Features a 5-year warranty against liner delamination.

Diameter	Part No.	Service Test	Proof Test	Burst Test	Bowl Size	Weight Uncoupled
1"	DP10-800-PU	400 psi	800 psi	1200 psi	1 <sup>3</sup> / <sub>8</sub> "	0.14 lbs/ft
1 <sup>1</sup> / <sub>2</sub> "	DP15-800-PU	400 psi	800 psi	1200 psi	1 <sup>5</sup> / <sub>16</sub> "	0.28 lbs/ft
1 <sup>3</sup> / <sub>4</sub> "	DP17-800-PU	400 psi	800 psi	1200 psi	2 <sup>1</sup> / <sub>8</sub> "	0.30 lbs/ft
2"	DP20-800-PU	400 psi	800 psi	1200 psi	2 <sup>2</sup> / <sub>5</sub> "	0.31 lbs/ft
2 <sup>1</sup> / <sub>2</sub> "	DP25-800-PU	400 psi	800 psi	1200 psi	3"	0.46 lbs/ft
3"	DP30-800-PU	400 psi	800 psi	1200 psi	3 <sup>1</sup> / <sub>2</sub> "	0.62 lbs/ft



# MAGNUM MAGLITE

## LIGHTWEIGHT NYLON 6.6 FIRE HOSE



Unique double jacket construction, combining the supple high strength of Nylon 6.6 yarn and polyester filament fibers to form a highly abrasion resistant outer jacket and an inner jacket with increased tensile strength and durability. Our proprietary reverse twill weave construction reduces friction loss while ensuring the hose is lightweight, easy to handle and easy to pack. Customize the core of this double jacket attack line with your choice of a thin wall, high tensile, EPDM rubber liner (Magnum) or polyurethane liner (Maglite). Both of these dependable liner options provide superior kink resistance and eliminate ozone deterioration while maintaining the lightweight integrity of the hose.

Magnum/Maglite can be coupled with 6061-T6 aluminum threaded couplings or forged Storz. Special threads or other custom features available upon request. Barcode recess available at additional charge.

## FOR SUPPLY AND ATTACK SITUATIONS

Maglite's polyurethane liner material meets NSF (National Sanitation Foundation) Standard 61 for potable water. The outer jacket is mildew resistant and is also available with iconic "Key-Lok" polyurethane based polymer impregnation for additional abrasion and moisture resistance.

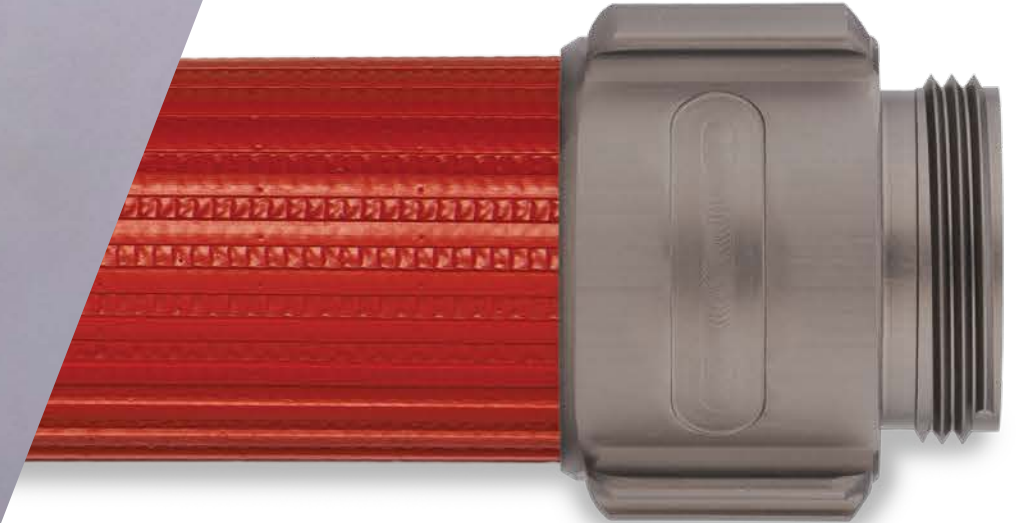
Diameter	Part No.	Service Test	Proof Test	Burst Test	Bowl Size	Weight Uncoupled
1 1/2"	DN15-800	400 psi	800 psi	1200 psi	1 15/16"	0.24 lbs/ft
1 3/4"	DN17-800	400 psi	800 psi	1200 psi	2 1/8"	0.28 lbs/ft
2 1/2"	DN25-800	400 psi	800 psi	1200 psi	3"	0.42 lbs/ft
3"	DN30-800	400 psi	800 psi	1200 psi	3 1/2"	0.54 lbs/ft
*4"	DN40-600	300 psi	600 psi	900 psi	4 1/2"	0.81 lbs/ft
*5"	DN50-600	300 psi	600 psi	900 psi	5 1/2"	0.90 lbs/ft

\*Polyurethane liner not available



# DURA-FLOW

HEAVY DUTY, HIGH PERFORMANCE **ATTACK HOSE**



The lightweight, small diameter, rubber covered attack hose that packs a big punch. The heat and chemical resistant, nitrile/PVC through-the-weave design provides peak performance and maximum flow. With a test pressure of 600 psi, Dura-Flow clearly outperforms conventional rubber covered attack lines.

Dura-Flow coupling options are as required by purchaser, expansion ring threaded, Storz clamp ring, etc. Barcode recess available at additional charge.

## RUBBER COVERED ATTACK HOSE

A rugged, thick ribbed outer jacket construction makes the hose highly resistant to kink, impact, punctures, cuts and abrasion. Ozone resistant, maintenance-free and no drying required, make Dura-Flow a reliable weapon in a firefighter's arsenal. NFPA compliant and UL Listed\*.

Diameter	Part No.	Service Test	Proof Test	Burst Test	Bowl Size	Weight Uncoupled
1"	RC10-600	300 psi	600 psi	900 psi	1 <sup>3</sup> / <sub>16</sub> "	0.15 lbs/ft
1 <sup>1</sup> / <sub>2</sub> "	RC15-600	300 psi	600 psi	900 psi	1 <sup>3</sup> / <sub>16</sub> "	0.24 lbs/ft
*1 <sup>3</sup> / <sub>4</sub> "	RC17-600	300 psi	600 psi	900 psi	1 <sup>5</sup> / <sub>16</sub> "	0.28 lbs/ft
2"	RC20-600	300 psi	600 psi	900 psi	2 <sup>1</sup> / <sub>4</sub> "	0.32 lbs/ft
*2 <sup>1</sup> / <sub>2</sub> "	RC25-600	300 psi	600 psi	900 psi	2 <sup>13</sup> / <sub>16</sub> "	0.48 lbs/ft



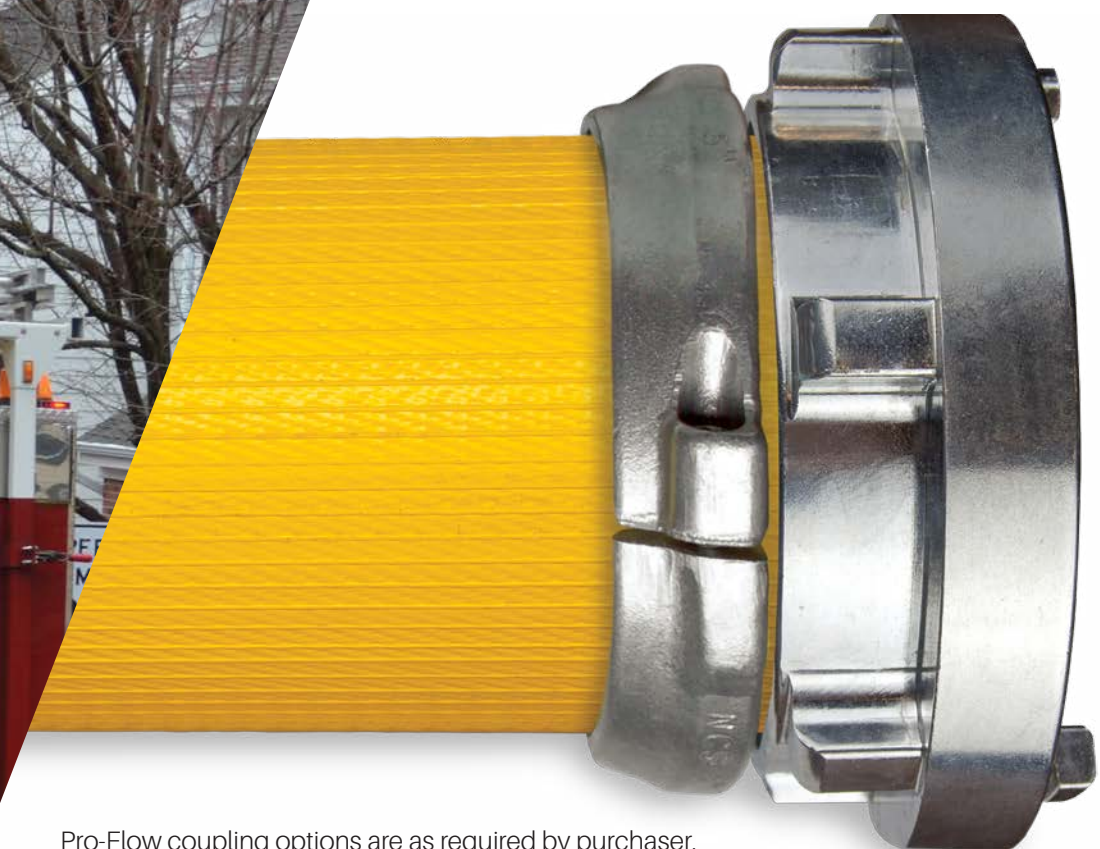
Red Yellow  
Other colors available upon special request

\*UL Listed to 250 psi



# PRO-FLOW

## HEAVY DUTY LARGE DIAMETER HOSE



A lightweight, heat resistant, large diameter supply hose that delivers superior flow during fireground operations. Ozone and chemical resistant, the nitrile/PVC through-the-weave design allows the hose to expand under pressure — decreasing friction loss and increasing water flow. The thin rib rubber outer cover offers increased resistance to impact, punctures and abrasion.

## LIGHTWEIGHT SUPPLY HOSE

Reliable, maintenance-free and no drying required, make this the ideal supply hose for municipal and industrial fire departments. NFPA compliant and UL Listed\*.

Pro-Flow coupling options are as required by purchaser, expansion ring threaded, Storz clamp ring, etc.

Diameter	Part No.	Service Test	Proof Test	Burst Test	Bowl Size	Weight Uncoupled
*3"	RC30-600	300 psi	600 psi	900 psi	3 <sup>3</sup> / <sub>8</sub> "	0.60 lbs/ft
**4"	RC40-500	250 psi	500 psi	750 psi	4 <sup>1</sup> / <sub>4</sub> "	0.74 lbs/ft
**5"	RC50-450	225 psi	450 psi	675 psi	5 <sup>1</sup> / <sub>4</sub> "	0.93 lbs/ft
6"	RC60-450	225 psi	450 psi	675 psi	6 <sup>1</sup> / <sub>4</sub> "	1.35 lbs/ft

\*UL Listed to 300 psi | \*\*UL Listed to 200 psi



Red Yellow  
Other colors available upon request



# PRO-FLOW HP

HIGH PRESSURE LARGE DIAMETER HOSE

A high pressure, high visibility, large diameter attack/supply hose with a 300 psi service test pressure. Heat and chemical resistant, the nitrile/PVC through-the-weave design allows the hose to expand under pressure — decreasing friction loss and increasing water flow. The thin rib rubber outer cover offers increased resistance to impact, punctures and abrasion.

Pro-Flow HP coupling options are as required by purchaser, expansion ring threaded, Storz clamp ring, etc.

## HIGH VISIBILITY SUPPLY HOSE

Reliable, maintenance-free and no drying required, make this the ideal supply hose for busy municipal fire departments. NFPA compliant and UL Listed.

Diameter	Part No.	Service Test	Proof Test	Burst Test	Bowl Size	Weight Uncoupled
4"	RC40-600	300 psi	600 psi	900 psi	4 1/4"	0.93 lbs/ft
5"	RC50-600	300 psi	600 psi	900 psi	5 1/4"	1.25 lbs/ft

UL Listed up to 200 psi



Hi-Visibility Green



# TYPE II

## LIGHTWEIGHT 5100-187 FORESTRY HOSE

Engineered to combat the rigors of wildland fire fighting and ideal for changing forestry terrain, providing the ultimate in heat, abrasion and puncture resistance. A heat resistant ring spun outer jacket prevents damage from sparks and radiant heat. The outer jacket is finished with our iconic "Key-Lok" polyurethane based polymer impregnation so hose will remain mildew resistant and require no drying.

## WILDLAND AND FORESTRY HOSE

Key Hose "smooth flow technology" delivers more water at higher pressures, all in a compact, lightweight design that goes where you need it, while easy to deploy and manage. Meets USDA-US Forestry Service Specification 5100-187 Type II.

Expansion ring threaded or quarter-turn quick connect couplings available as specified by the end-user. Couplings shall meet 5100-108 minimum requirements.

Diameter	Part No.	Service Test	Proof Test	Burst Test	Bowl Size	Weight Uncoupled
1"	SP10-600PU	300 psi	600 psi	900 psi	1 3/16"	0.10 lbs/ft
1 1/2"	SP15-600PU	300 psi	600 psi	900 psi	1 11/16"	0.12 lbs/ft

Hose will be marked FSS, 450 WP, 187 Type II, per US Forest Service Specification 5100-187C



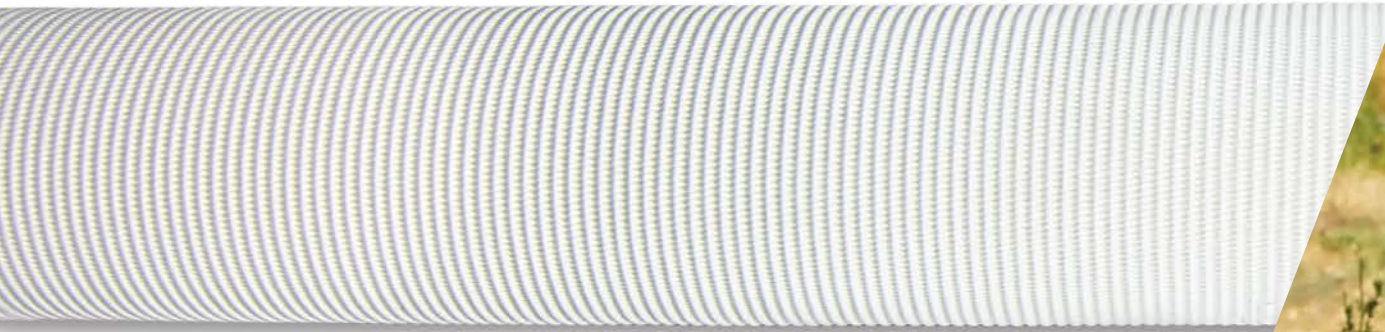
Yellow

5100-187 colors



# TYPE I

## LIGHTWEIGHT 5100-187 FORESTRY HOSE



Manufactured in accordance with USDA-US Forestry Service Specification 5100-187, Type I provides superior heat, abrasion and puncture resistance for demanding forestry applications.

## WILDLAND AND FORESTRY HOSE

The polyurethane lining with Key Hose "smooth flow technology" delivers more water at higher pressures. Lightweight, easy to handle and fitted with threaded or quarter-turn couplings.

Expansion ring threaded or quarter-turn quick connect couplings available as specified by the end-user. Couplings shall meet 5100-108 minimum requirements.

Available in percolating and non-percolating construction.

Diameter	Part No.	Service Test	Proof Test	Burst Test	Bowl Size	Weight Uncoupled
1"	FF10-450	300 psi	600 psi	900 psi	13/16"	0.08 lbs/ft
1 1/2"	FF15-450	300 psi	600 psi	900 psi	1 11/16"	0.12 lbs/ft



White

Hose will be marked FSS, 450 WP, 187 Type I, per US Forest Service Specification 5100-187C



# '1061 PENCIL LINE

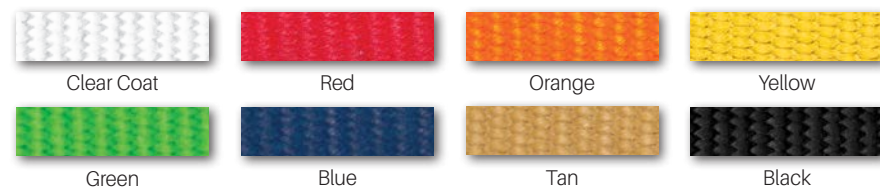


Lightweight, circular woven fire hose technology incorporating high tensile, all polyester woven jacket, lined with high tensile NSF polyurethane. This workhorse hose packs tight and features brass GHT threaded couplings with strain reliefs.

## WOVEN POLYESTER HOSE

Constructed to meet or exceed U.S. government federal specification 4210-01-167-1061 and is ideally suited for rigorous forestry applications including pumper protection, mop-up and clean-up operations.

Diameter	Part No.	Weight 50' Coupled
5/8"	FF058-300	1.3 lbs
3/4"	FF075-600	1.5 lbs



NFPA Colors Available



# REEL-LITE



The industry's most durable and lightweight, high pressure booster hose featuring a highly abrasion and heat resistant single jacket polyester cover. Uniquely constructed using an interior helical reinforcement offering unmatched kink resistance that maintains hose shape and performance.

## BOOSTER HOSE

Designed for use with most low-profile reels and skid units and available in lengths up to 200'.

Diameter	Part No.	Service Test	Proof Test	Burst Test	Bowl Size	Weight 50' Coupled
1"	RB10-800	400 psi	800 psi	1200 psi	1 5/16"	10 lbs





**Apparatus**

- 1 Fire apparatus pump
- 1 Double jacket 2 1/2" x 25' 800 psi fire hose coupled 2 1/2" aluminum NH
- 2 Inline calibrated gauges
- 1 2 1/2" x 1 1/2" aluminum adapter
- 2 50' attack lines coupled 1 1/2" NH
- 1 Smooth bore nozzle 1 5/16" tip

**Procedure**

Test is performed using a 2 1/2" double jacket Big-10 x 25' long fire hose from the pump panel to the ground. A 2 1/2" x 1 1/2" adapter is added to the male end of the 2 1/2" to ensure an accurate reading at the inlet gauge without vibration. A calibrated inline gauge is then placed behind the adapter. Two lengths 50' long test samples are coupled together and placed in a straight line laying flat on the ground. A second calibrated inline gauge is placed at the discharge end (male end) along with a 1 5/16" smooth bore nozzle. The total assembly is filled with water and the nozzle has an open-end discharge until a pressure of 50 psi is reached at the discharge end. A reading is simultaneously taken on both gauges to correctly determine the friction loss of the 100' long assembly.

**Results**

Product	Diameter	Gallons per Minute	Friction Loss 50'	Coefficient of Flow
Combat Ready	1 3/4"	185 gpm	11 psi	6.59
Combat Ready	2" w/ 1 1/2"	185 gpm	9 psi	5.25
Combat Ready	2" w/ 2 1/2"	185 gpm	7 psi	4.13
Key-Lite	1 3/4"	185 gpm	25 psi	14.2
Magnum	1 3/4"	185 gpm	19 psi	11.6
Big-10 (FDNY spec)	1 3/4"	185 gpm	13 psi	7.44
Big-10	1 3/4"	185 gpm	22 psi	13.2
Eco-10	1 3/4"	185 gpm	21 psi	12.4
TRU-ID	1 3/4"	185 gpm	22 psi	13.2



Visit us online for a complete friction loss guide on all Key Hose products.

**KEY-LOK TECHNOLOGY**

Key-Lok, exclusively from Key Hose, is a polyurethane based polymer employing revolutionary nano-pigment technology. More than doubling the abrasion resistance of your hoseline compared to untreated hoselines, this proprietary formula also offers unprecedented color fastness to provide years of vibrant, visual hose identification. Key-Lok is non-toxic, environmentally safe and highly durable. Mechanically infused and heat-set to encapsulate, soak and protect each yarn while also bonding the fibers of the weave to the protective polymers of the formula. Finish off your jacketed hoselines with the best in added abrasion resistance and color longevity, This Is Key.

- 100% increase in abrasion resistance
- Reinforces hoseline from coupling to coupling
- Robust and enhanced handling
- Resistant to solvents, oils and hydrocarbons
- Inhibits water pick-up
- Mildew, UV and ozone resistant



**UL AND ULC LISTINGS**

Underwriters Laboratories provides safety-related certification, validation, testing, inspection, auditing, advising and training services for fire hose products. This registration is your assurance that Key Hose complies with all the rules and guidelines for quality assurance and reliability. Key Hose products are known for their specific features, accurate dimensions and performance.

**FM APPROVALS**

The independent testing arm of international insurance carrier, FM Global. FM Approvals uses scientific research and testing to make sure products conform to the highest standards for safety and property loss prevention. FM Approvals follows five steps to make sure the products they're testing meet quality guidelines. Products that pass get the "FM APPROVED" mark.

**COUPLING OPTIONS**

To complement our extensive line of fire hose products, we offer an array of coupling options including hard-coated, aluminum rocker lug couplings, cast brass and forestry couplings as well as lightweight, self-locking Storz couplings. Key Regional Sales Managers and Customer Service Professionals will gladly assist in selecting couplings to meet required specifications.

**WARRANTY**

At Key, all fire hose products are subjected to the most stringent quality control standards in the industry. Our world-class manufacturing facilities combine innovative technology and equipment to ensure a consistent level of superior quality and timely delivery. Key fire hose products have guaranteed service life ranging from one year to ten years. Refer to individual product specifications for exact warranty information.



# NFPA PRESSURE RATING DEFINITIONS

## Service Test Pressure

Annual hydrostatic test to be conducted by purchaser on all in-service (used) hose to determine suitability for continued use. The service test pressure is to be 10% greater than the "normal highest operating pressure" at which the hose is expected to be used. Unless otherwise instructed, this pressure is stenciled on all NFPA compliant hose prior to shipment.

## Proof/Acceptance Test Pressure

The "one-time" test pressure, performed by the factory, on every new hose prior to shipment. The proof test pressure shall not be less than two times the specified service test pressure.

## Burst Pressure

The minimum burst test pressure shall not be less than three times the specified service test pressure. Conducted at the factory as part of continual Quality Control and NFPA design compliance.



Key Hose vows to remain dedicated and responsive to a market that requires an arsenal of products that is second to none. We rely on our end users and distributors for valuable insight into new innovations and product development. It's the voice of our customers that challenges our employees to deliver products that are relied on to save lives and protect property. We'd like to salute all the fire departments and firefighters who have made Key the preferred choice for more than three decades.





**keyhose.com**

800.447.5666 | Fax: 800.447.5664

P.O. Box 7107, Dothan, Alabama 36302

*Key Hose reserves the right to modify any specification without prior notice to meet or exceed changing standards. For more information please contact a Key Hose authorized distributor. 04/21*

**Distributed by:**

