



ANDERSON PROCESS

BREWING PROCESS EQUIPMENT FOR RELIABLE, SAFE AND SANITARY PRODUCTION



INTEGRATED
BREWING
SOLUTIONS



HOSE & FITTINGS

GLIDETECH BUTYL



- Premium grade low permeation flexible suction and delivery hose for wine and spirits
- Extra flexible corrugated cover
- Good for CIP (clean-in-place)
- 3-A Sanitary Standard 18-03

VINTNER RESERVE



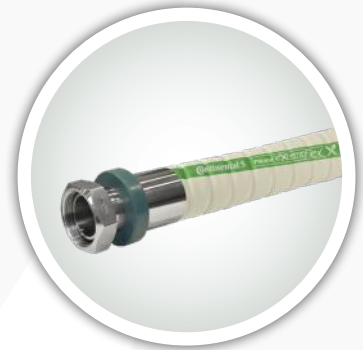
- Used for transferring wine, beer, potable water and more
- Consistent 250 psi rating
- White chlorobutyl tube
- Conforms to FDA, USDA and 3-A Sanitary Standard 18-03

PLICORD EXTREMEFLEX BEVERAGE



- Used at beer, wine, distillery and beverage transfer facilities
- Corrugated UHMWPE EZ-Clean smooth cover and chlorobutyl tube
- Conforms to FDA, USDA and 3-A Sanitary Standard 18-03

PLICORD EXTREMEFLEX FOOD GRADE



- High-tech, flexible corrugated hose with pretzel-like agility
- Rated for pressures up to 150 psi
- White Chemivac tube that is FDA and USDA compliant and conforms to 3-A Sanitary Standard 18-03

NUTRIFLO SUCTION & DISCHARGE



- Constructed with Pliovic materials and a high density Pliovic helix
- 3/4" to 6" I.D. options available
- Rated for pressures up to 120 psi
- FDA, USDA, NSF-61 and 3-A Sanitary Standard 18-03 compliant

PLICORD BREWLINE



- Discharge hose designed for transferring non-oily liquid products in wineries and breweries
- Rated for pressures up to 250 psi
- FDA, USDA and 3-A Sanitary Standard 18-03 compliant

WASHDOWN HOSE



- Used in food processing plants, dairies and breweries
- Microban product protection cover
- Blue Fortress 300
- Super Sani-Wash 300
- Yellow Fortress 300

GLIDETECH DISTILLERY



- Suction and delivery hose suitable for a wide range of food products
- Rated for pressures up to 150 psi
- Corrugated non-marking cover
- Good for CIP (clean-in-place)
- Phthalates free tube

WASHDOWN ACCESSORIES



ATTACHMENT METHODS



HOSE ACCESSORIES & SANITARY EQUIPMENT



PROCESS EQUIPMENT

AMPCO ROLEC DH INDUCTION SYSTEMS



- Models: DH45, DH90 & DH250
- Pellet Capacity: 44 lbs/88 lbs/264 lbs
- Pump: SBI-R10
- Recirculation: 2.0 bbls & 2.9 bbls
- Port Size: 1.5" & 2"
- Motor: 5 HP & 10 HP

AMPCO CELLAR CART FOR BEER & CIP



- Ampco AC+ Series pump
- Flows up to 920 GPM
- Max viscosity of 1,200 cP
- Pressures up to 60 psi
- NEMA 4X VFD
- 316L stainless steel construction

AMPCO CB+ CRAFT BREW PUMP



- Flows up to 920 GPM
- Max viscosity of 1,200 cP
- Pressures up to 130 psi
- 316L stainless steel
- Dynamically balanced impeller
- Available in 8 model sizes

AMPCO WINE, MUST & YEAST CART



- Ampco ZP1 Pump
- Flows up to 452 GPM
- NEMA 4X VFD
- Pressures up to 225 psi
- 304 stainless steel gearcase
- 10" foam filled wheels

BJM SKX SUBMERSIBLE PUMP



- Flows up to 911 GPM
- Sizes available from 2" to 6"
- Motor ratings from 1 HP to 20 HP
- 316 cast stainless steel construction
- Shredder action non-clog impellers
- FKM elastomers

SHELCO MICROVANTAGE HOUSINGS



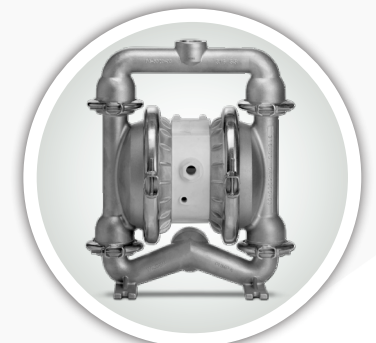
- MicroVantage HPI Series
- MicroVantage HPV Series
- MicroVantage Sanitary SFH Series
- Equipped with 222, 226 or DOE style cartridge connectors
- 316L stainless steel construction

SHELCO FILTER CARTRIDGES



- Pore Sizes: 0.1, 0.2, 0.45, 0.65, 0.8, 1.0, 1.2 microns absolute retention
- Lengths: 9.75", 10", 20", 30" & 40"
- 7.2 sq.ft. per 10 inches filter length
- 1" I.D. / 2.67" O.D.
- Polyethersulfone filter media

WILDEN DIAPHRAGM PUMP



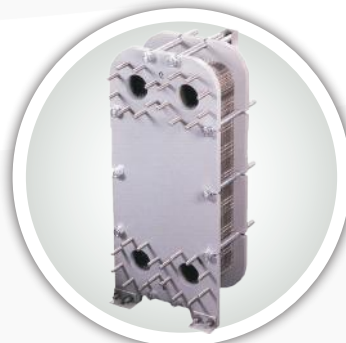
- Flows up to 231 GPM
- Pressures up to 125 psi
- Sizes available from 1/4" to 3"
- ADS options - Pro-Flo, Pro-Flo Shift
- Complies with FDA, HS, 3A, ATEX and EHEDG standards

GOULDS CENTRIFUGAL PUMP



- Flows up to 175 GPM
- Up to 150 ft head / 125 psi
- 316L stainless steel construction
- High efficiency enclosed impeller
- Standard John Crane mechanical seal design

PLATE & FRAME HEAT EXCHANGER



- Up to 30,000 GPM
- Pressures up to 450 psi
- Heat transfer area 50,000 SQ FT
- Temperatures from -31°F to 338°F
- Double wall protection and free flow clog resistant options available

CAT PLUNGER PUMP



- Flows from 0.13 GPM to 240 GPM
- Pressures up to 10,000 psi
- Available in brass, nickel aluminum bronze, 304 and 316 stainless steel
- Utilize spring-loaded closed inlet and discharge valves

SHARPE PORTABLE MIXER



- Tank sizes up to 5,000 gallons
- Viscosities up to 15,000 cP
- Clamp, plate or flange mounted
- Direct drive, gear drive, thrifty and USDA approved stainless steel models available



Rubber Fab



S **SIZE**
INSIDE DIAMETER, LENGTH, OUTSIDE DIAMETER

T **TEMPERATURE**
INTERNAL/EXTERNAL, MINIMUM/MAXIMUM

A **APPLICATION**
WHAT IS THE HOSE BEING USED FOR

M **MATERIAL**
WHAT PRODUCT IS BEING CONVEYED

P **PRESSURE**
NORMAL WORKING PRESSURE, BURST PRESSURE

E **ENDS**
NECESSARY COUPLINGS, TYPE, SIZE AND THREAD

D **DELIVERY**
TESTING, QUALITY, PACKAGING AND DELIVERY



Wisconsin Corporate
Brookfield, WI 53045
(262) 784-3340

Illinois Branch
Lombard, IL 60148
(630) 782-6834

Indiana Branch
Indianapolis, IN 46278
(317) 875-6900

Michigan Branch
Plymouth, MI 48170
(248) 476-7782